

# PALLET SHUTTLE

## ATOM- PS Series

Pallet Storage and Retrieval Robot  
Designed for High-Density Storage and  
Automated Handling



### Excellent Performance

- ✓ 1,500 kg load capacity with an exceptional deadweight-to-load ratio
- ✓ 8-hour average battery life
- ✓ 30% higher efficiency with no adjustments needed for movements



### Robust and Reliable

- ✓ Mechanical lift structure ensures stability and easy maintenance
- ✓ Thermal runaway temperature  $\geq 500^{\circ}\text{C}$ , ensuring safety
- ✓ MTBF  $\geq 2,000$  hours for enhanced reliability



### Intelligent and Smart

- ✓ Supports autonomous obstacle avoidance with omni-directional sound and light alarms
- ✓ Features best path planning and optimized rhythm for maximum efficiency



### Advanced Design

- ✓ High-precision industrial design, striving for perfection.
- ✓ Slim structure: Just 125mm, maximizing space efficiency
- ✓ Lightweight design: Deadweight of only 330kg

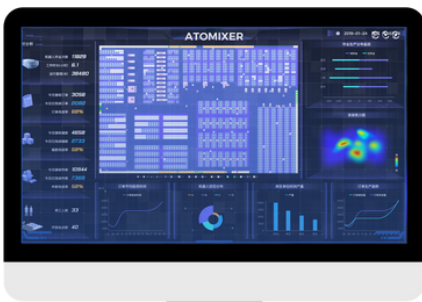


# Specifications

ATOMIX

		Standard Version					Cold Version			Dustproof Version
		PS1200D	PS1500A	PS1500B	PS1500C	PS1800C	PS1500AC	PS1500BC	PS1500CC	PS1500BD
Basic	Rated Load (kg)	1200	1500	1500	1500	1800	1500	1500	1500	1500
	Adaptable Pallet Size (mm)	1200*800	1200*1000 1100*1000	1200*1200	1400*1200 1350*1350	1600*1300	1200*1000 1100*1000	1200*1200	1400*1200 1350*1350	1200*1200
	Shuttle Weight(kg)	310	330	350	370	430	330	350	370	370
Performance	Max. Speed (m/s) Loaded / Unloaded	1.2 / 1.5	1.2 / 1.5	1.2 / 1.5	1.2 / 1.5	1.2 / 1.5	1.2 / 1.5	1.2 / 1.5	1.2 / 1.5	1.2 / 1.5
	Max. ACC (m/s ) Loaded / Unloaded	0.3 / 2.0	0.3 / 2.0	0.3 / 2.0	0.3 / 2.0	0.3 / 2.0	0.3 / 1.0	0.3 / 1.0	0.3 / 1.0	0.3 / 2.0
	Lifting and lowering Time (s)	2.5	2.5	2.5	2.5	4.0	2.5	2.5	2.5	2.5
	Turning Time (s) Loaded / Unloaded	3.5 / 2.5	3.5 / 2.5	3.5 / 2.5	3.5 / 2.5	5.5 / 4.5	3.5 / 2.5	3.5 / 2.5	3.5 / 2.5	3.5 / 2.5
Battery	Type	LFP	LFP	LFP	LFP	LFP	LTO	LTO	LTO	LFP
	Capacity	46V 40Ah	46V 40Ah	51.5V 60Ah	51.5V 60Ah	51.5V 60Ah	46V 40Ah	46V 40Ah	46V 40Ah	51.5V 60Ah
	Endurance (h)	≥8	≥7	≥10	≥10	≥8	≥7	≥8	≥8	≥10
	Charging duration(h)	<1.5h	<1.5h	<1.5h	<1.5h	<1.5h	<2h	<2h	<2h	<1.5h
Environment	Ambient Temperature	-10°C~45°C					-25°C~45°C			-10°C~45°C
	Ambient Humidness	5%~90% Non-Condensing					5%~90% Non-Condensing			5%~90% Non-Condensing

## Software - Atomixer



With 50+ advanced algorithms, Atomixer enables efficient management of robots, containers, and orders. Its modular design and flexible APIs allow seamless integration as a black box, grey box, or white box.

Its highly modular design and flexible API interfaces ensure effortless integration and adaptability, making it a versatile solution for diverse operational needs.



Comprehensive functionality  
Advanced algorithms



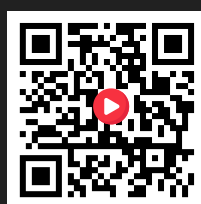
Easy to use  
Stable and reliable



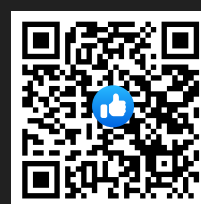
Web



Linkedin



Youtube



Facebook



Twitter

ATOMIX TECHNOLOGY PTE. LTD

3 International Business Park, #01-13, Singapore

GET IN TOUCH

marketing@atomix.sg

www.atomix.sg