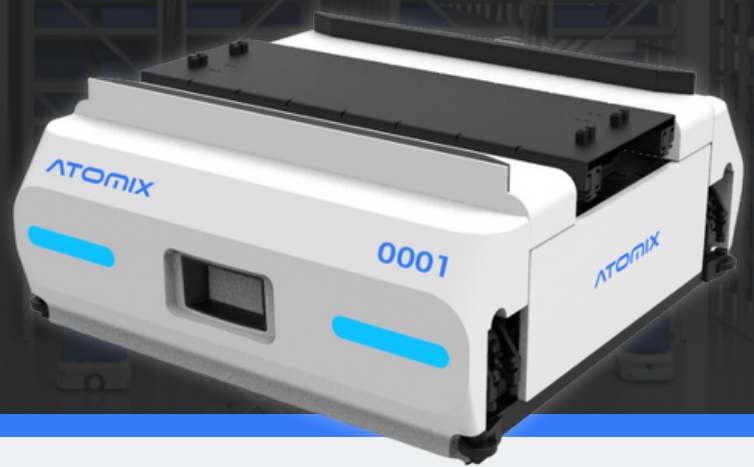


# BIN SHUTTLE

## ATOM-E30D

Bin Storage and Retrieval Robot  
Designed for  
High-Density Bin Storage and Retrieval



### Outstanding Efficiency

- ✓ With ground movement speeds of up to 4 m/s, it delivers high efficiency.
- ✓ The vertical climbing speed is unaffected by height, ensuring smooth ascension.
- ✓ Aisle width of only 779mm for ultimate storage efficiency



### Seamless Flexibility

- ✓ No lift installation required, allowing for flexible task completion.
- ✓ Proprietary arc-turning technology ensures continuous and smooth directional changes.
- ✓ The vehicle moves freely in six directions, achieving true omni-directional flexibility.



### Safety & Reliability

- ✓ Equipped with 180° laser obstacle avoidance technology and an audio-visual alarm system, it provides comprehensive safety protection.
- ✓ An aerial locking feature minimizes the risk of equipment falling.



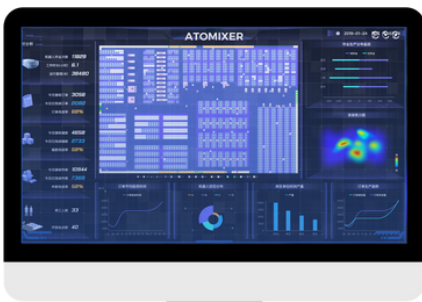
### Smart Innovation

- ✓ The self-developed climbing posture adjustment and re-engagement retry control algorithm enhance operational intelligence and safety.
- ✓ Its proprietary controller offers rich interfaces and powerful scalability, excelling in perception, decision making, and execution.



Overview	Dimensions (length*width*height)	672*672*320 mm(including guide)
	Rotation Diameter	1180 mm
	Weight	75kg
	Payload	30kg
	Climb distance	0-12 m
	Bin Size	600*400 mm
	Navigation	QR code+IMU
Performance	Max. Speed Unloaded / Loaded	4 / 4 (m/s)
	Max. Acc Unloaded / Loaded	1 / 1 (m/s <sup>2</sup> )
	Positioning Accuracy	±10 mm
	Stop Position& Angle Precision	±5 mm & ±1°
	Traversable Gap and Sill Tolerance	5mm step, 15mm GAP
	Max. Gradeability	3°
Battery	Charging Voltage	51.2V 18Ah
	Cycles Life (Times)	Complete charge and discharge for 2000 times
	Battery Life in Use	6-8H (related to working conditions)
	Charging Time	SOC 0-100% charging time ≤ 1H
Safety	Laser Obstacle Radar (Front)	Max. Detection Angle 180 °
	Emergency Stop Button	Yes
	Sound-light Alarm	Yes
Communication	Wi-Fi	802.11 a/b/g/n Wi-Fi, 2.4G/5G
Environment	Ambient Temperature	-10°C~45°C
	Ambient Humidness	5%~90% Non-Condensing

## Software - Atomixer



With 50+ advanced algorithms, Atomixer enables efficient management of robots, containers, and orders. Its modular design and flexible APIs allow seamless integration as a black box, grey box, or white box.

Its highly modular design and flexible API interfaces ensure effortless integration and adaptability, making it a versatile solution for diverse operational needs.



Comprehensive functionality  
Advanced algorithms



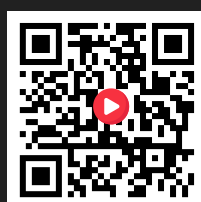
Easy to use  
Stable and reliable



Web



Linkedin



Youtube



Facebook



Twitter