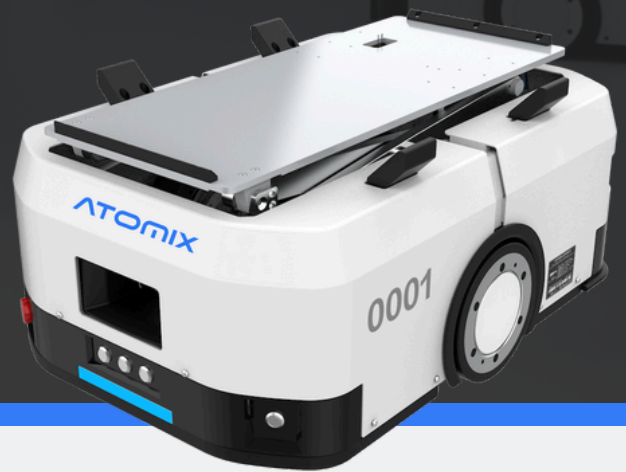


# BIN AMR ATOM-T50

Bin Handling Autonomous Mobile Robot  
Designed for Efficient Handling of Bins,  
Cartons and other Containers



## Safety Protection

- ✓ Intelligent obstacle avoidance and safety collision systems ensure the safety of both operators and equipment.
- ✓ Wide safety monitoring coverage, with a laser radar range of up to 200°.



## Intelligent Collaboration

- ✓ Wide lifting range, from 305mm to 805mm, with rapid lifting speeds of up to 60mm/s.
- ✓ Ergonomically designed to adapt to picking positions, improving picking efficiency by over 30%.



## Low-Carbon Operation

- ✓ Three synchronized motors optimize efficiency, consuming <0.8 kWh/hour for energy savings.
- ✓ 1C fast charging enables 7 minutes of charge for 1 hour of operation.



## Quick Deployment

- ✓ With a standardized design, it takes only hours to complete deployment
- ✓ Intelligent indexing learning, with each code point learning time as short as 15 seconds, enabling rapid deployment.

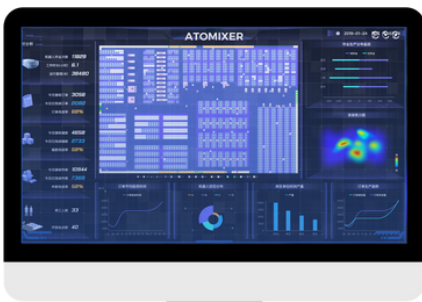


# Specifications



Overview	Dimensions (length×width×height)	660*460*305 mm(including guide)
	Rotation Diameter	715 mm
	Weight	60 kg
	Payload	50 kg
	Climb distance	500 mm
	Bin Size	600*400 mm
	Navigation	QR code+IMU
Performance	Max. Speed Unloaded / Loaded	4 / 2 (m/s)
	Max. Acc Unloaded / Loaded	2 / 1.5 (m/s <sup>2</sup> )
	Positioning Accuracy	±10 mm
	Stop Position& Angle Precision	±5 mm & ±1°
	Traversable Gap and Sill Tolerance	5mm step, 30 mm GAP
	Max. Gradeability	5°
Battery	Charging Voltage	51.2V 15Ah
	Cycles Life (Times)	Complete charge and discharge for 2000 times
	Battery Life in Use	6-8H (related to working conditions)
	Charging Time	SOC 0-100% charging time ≤ 2H
Safety	Laser Obstacle Radar (Front)	Max. Detection Angle 200 °
	Emergency Stop Button	Yes, Two
	Sound-light Alarm	Yes
Communication	Wi-Fi	802.11 a/b/g/n Wi-Fi, 2.4G/5G
Environment	Ambient Temperature	-10°C~45°C
	Ambient Humidness	5%~90% Non-Condensing

## Software - Atomixer



With 50+ advanced algorithms, Atomixer enables efficient management of robots, containers, and orders. Its modular design and flexible APIs allow seamless integration as a black box, grey box, or white box.

Its highly modular design and flexible API interfaces ensure effortless integration and adaptability, making it a versatile solution for diverse operational needs.



Comprehensive functionality  
Advanced algorithms



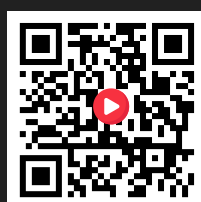
Easy to use  
Stable and reliable



Web



LinkedIn



Youtube



Facebook



Twitter

**ATOMIX TECHNOLOGY PTE. LTD**

3 International Business Park, #01-13, Singapore

**GET IN TOUCH**

marketing@atomix.sg

www.atomix.sg